

Convert a MobileMapping job to a GNSS Solutions style job

By: ???

Date: January 22, 2007

Thesis:

Mobile Mapper job files (.mmj) and associated data files (.B00, .E00 and .I00) are at first glance a different file type than the raw data files that ProMark3 receivers in "Survey" generate. The MobileMapper Office programs appears to be the only way to use MobileMapping data.

It is possible to easily convert MobileMapper jobs into GNSS Solutions readable datasets. Once converted, one can post process a MobileMapping static job against three (or more) CORS sites, building a network which will generate superior results.

In addition, once converted the RINEX converter can be used to extract L1 RINEX files from MobileMapper jobs.

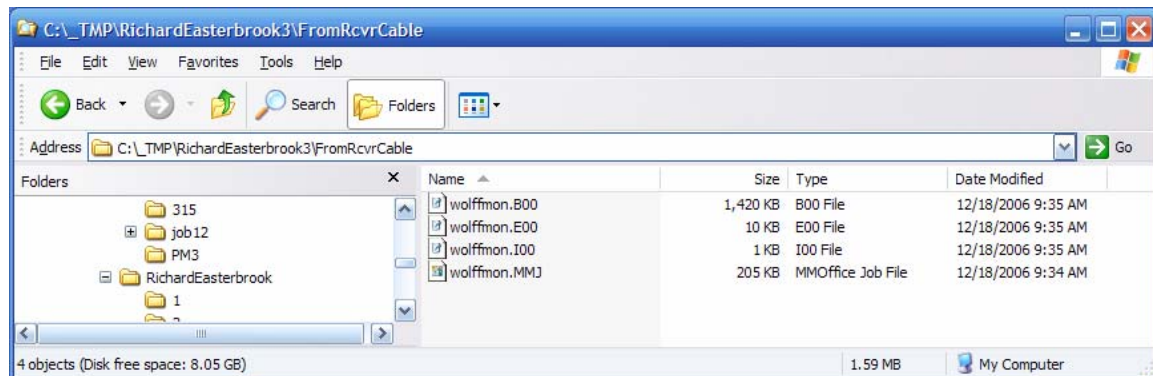
Caveats:

Receivers with firmware prior to 6.52 generate slightly different files. Stop and Go jobs are a little more difficult to process (perhaps more on that at a later date.)

This is not an official Magellan document; your mileage may vary, don't blame me or whine if it won't work for you.

Details:

MMJob files look like this:



You can convert the MMJ file set to a PM3 like file set:

Rename the wolfman.B00 file to BWOLFA06.310

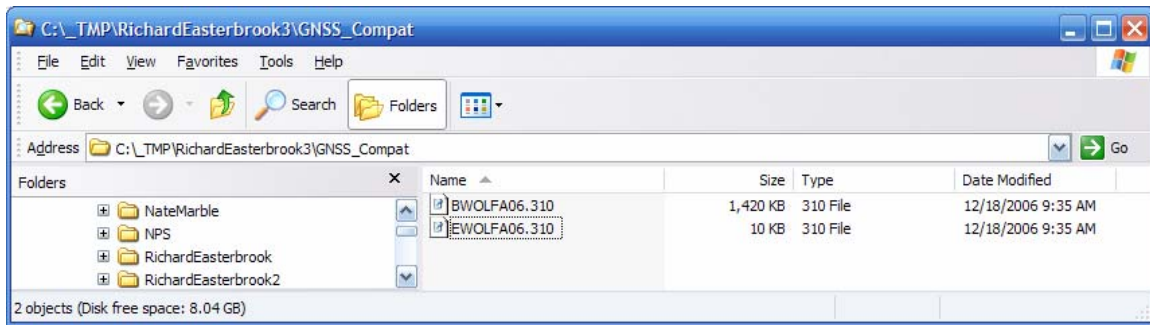
Rename the wolfman.E00 file to EWOLFA06.310

Where A is the sequence number, 06 is the year and 310 is the Julian day.

{If you suspect that your original .E00 file is biffed then just get any file that overlaps your B file in time. If you get a RINEX replacement file, use the RINEX converter to convert it to Ashtech format.}

If the file is static, then you don't need the rest of the files.

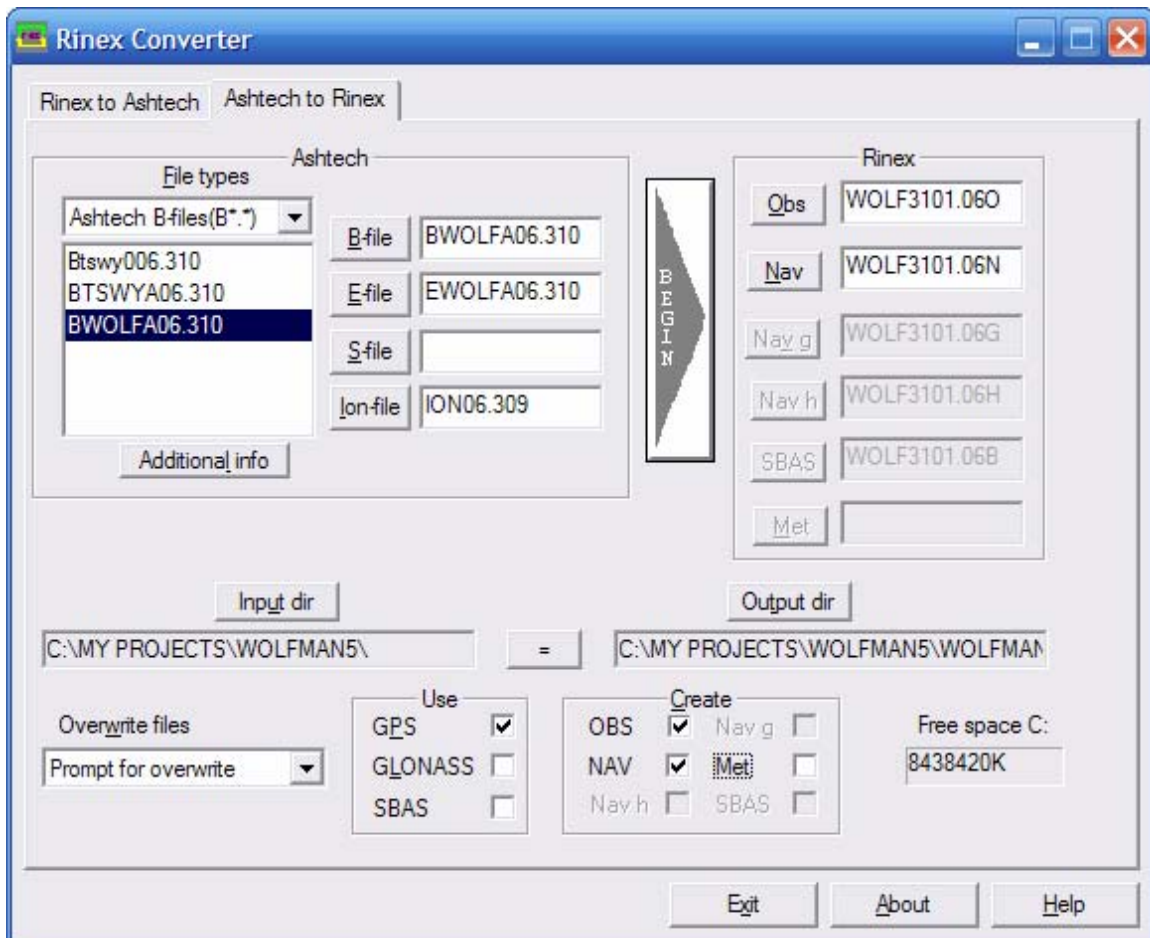
Now your folder will look like this:



From the GNSS Solutions project manager, you may “Import, Import Raw Data from Files (F4)” into a job.

From within GNSS Solutions, on the ‘Files’ tab, double click on the line holding the file and adjust the instrument height. As always, is probably best to set the HI to the actual HI, not 0.00 or a random value ☺

In the case of the wolfman file above, the GNSS solutions will not process the files. To inspect the contents, use the RINEX converter to convert the Ashtech files to ASCII RINEX:



{At this point, if you suspect that the navigation file (WOLF3101.06N) is errant, you can replace it with a like dated nav file from a CORS site. Then you can start a New GNSS Solutions job and import the converted RINEX files directly.}

This information is supposed to be a secret, so play like you don't know about it.